

CURVACE aims at developing the first curved, flexible and programmable artificial compound eyes.

This project brings together diverse disciplines:

microoptoelectronics

neuromorphic engineering

flexible electronics

vision processing

robotics

### Project Coordinator

Prof. Dario Floreano  
École Polytechnique Fédérale de Lausanne



Contact: Ramon Pericet-Camara  
Laboratory of Intelligent Systems  
Station 11  
CH - 1015 Lausanne, Switzerland  
Phone: +41 21 69 37755  
Fax: +41 22 69 35859  
E-Mail: [ramon.pericet@epfl.ch](mailto:ramon.pericet@epfl.ch)

### Project Partners

Université de la Méditerranée  
Aix-Marseille II  
Dr. Stéphane Viollet  
CNRS-UNIVMED Institut des Sciences  
du Mouvement Etienne Jules Marey  
Groupe de Biorobotique  
<http://www.ism.univmed.fr/>



Fraunhofer Institute for Applied  
Optics and Precision Engineering  
Dr. Robert Leitel  
Department of Microoptical Systems  
<http://www.iof.fraunhofer.de/>



Eberhard Karls Universität Tübingen  
Prof. Hanspeter Mallot  
Laboratory of Cognitive Neuroscience  
<http://www.cog.uni-tuebingen.de/>



[www.curvace.org](http://www.curvace.org)

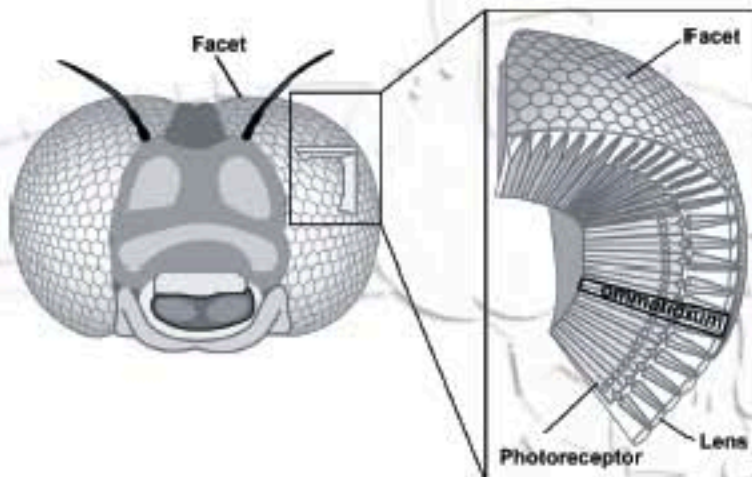


The project CURVACE acknowledges the financial support of the Future and Emerging Technologies (FET) programme within the Seventh Framework Programme for Research of the European Commission, under FET-Open grant number: 237940



## Animal compound eyes

The compound eye consists of a curved array of microlenses each conveying light to one or more photoreceptors. This vision organ is very efficient for local and global motion analysis over a large field of view, making it an excellent sensor for accurate and fast navigation in 3D dynamic environments. Compound eyes are found in many invertebrates bearing a wide range of shapes, but still sharing the same working principle.



CURVACE will provide:

- more efficient visual abilities for motion analysis
- large field of view, no optical distortion, infinite depth-of-focus
- adaptive sensitivity issued by novel neuromorphic imagers
- mechanical adaptability to different shapes and curvatures
- small, thin and self-contained packaging
- programmability

## Applications

CURVACE will offer advantages and novel functionalities in diverse application scenarios, such as:

- flying microrobots
- wearable sensing
- miniature collision-alert systems
- medical endoscopes
- soft robotics

